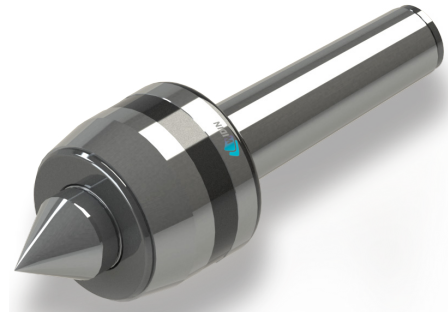
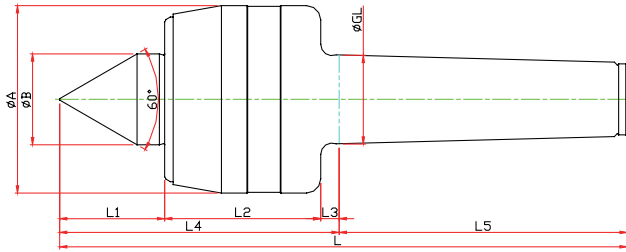


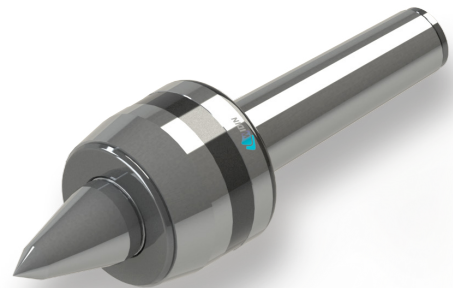
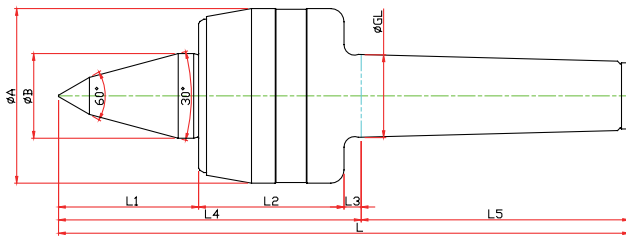
NCP-TYPE



Model	Order Number	Morse Taper	Dimension									Weight MAX.	R.P.M MAX.	Run Out
			GL	A	B	L1	L2	L3	L4	L5	L			
LC-3NCP	030003	NO.3	23.825	50	22	27	45	5	77	81	158	800	4800	0.003
LC-4NCP	030004	NO.4	31.267	66	32	37	55	6.5	98.5	101.5	200	1300	3800	0.003
LC-5NCP	030005	NO.5	44.399	82	40	45	65	6.5	116.5	129.5	246	1900	3400	0.005
LC-6NCP	030006	NO.6	63.384	100	45	65	80	8	153	182	335	2500	3000	0.005

NCPB-TYPE

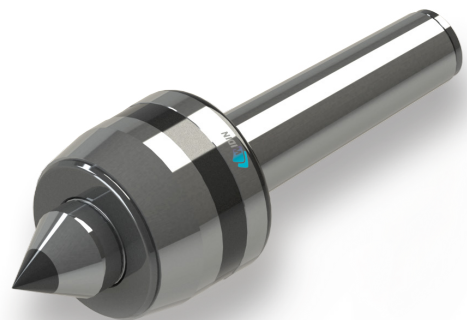
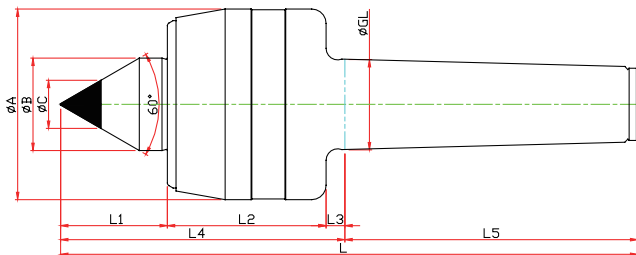
※ SHAFT 확장(바이트 간섭 최소화) SHAFT EXTENTION(Minimize the bite-interference)



Model	Order Number	Morse Taper	Dimension										Weight MAX.	R.P.M MAX.	Run Out
			GL	A	B	b	L1	L2	L3	L4	L5	L			
LC-3NCPB	031003	NO.3	23.825	50	22	10	27	45	5	97	81	178	410	4800	0.003
LC-4NCPB	031004	NO.4	31.267	66	32	14	37	55	6.5	114.5	101.5	216	710	3800	0.003
LC-5NCPB	031005	NO.5	44.399	82	40	16	45	65	6.5	136.5	129.5	266	1000	3400	0.005
LC-6NCPB	031006	NO.6	63.384	100	45	18	65	80	8	166	182	348	1400	3000	0.005

NCPC-TYPE

※ 초경타입 Carbide Type



Model	Order Number	Morse Taper	Dimension										Weight MAX.	R.P.M MAX.	Run Out
			GL	A	B	L1	L2	L3	L4	L5	C	L			
LC-3NCPC	030103	NO.3	23.825	50	22	27	45	5	77	81	10	158	800	4800	0.003
LC-4NCPC	030104	NO.4	31.267	66	32	37	55	6.5	98.5	101.5	14	200	1300	3800	0.003
LC-5NCPC	030105	NO.5	44.399	82	40	45	65	6.5	116.5	129.5	18	246	1900	3400	0.005
LC-6NCPC	030106	NO.6	63.384	100	45	65	80	8	153	182	25	335	2500	3000	0.005